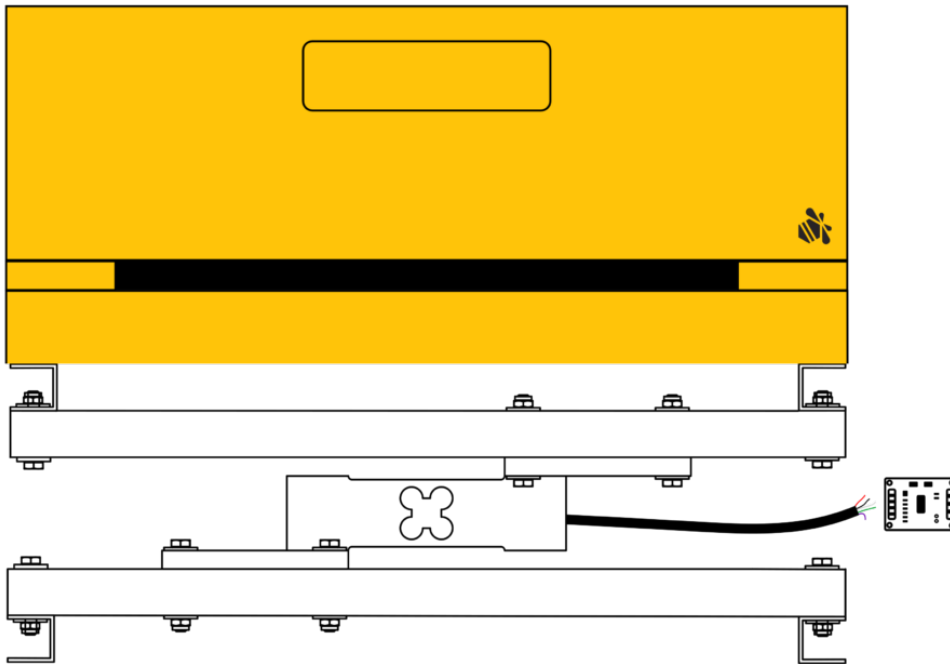
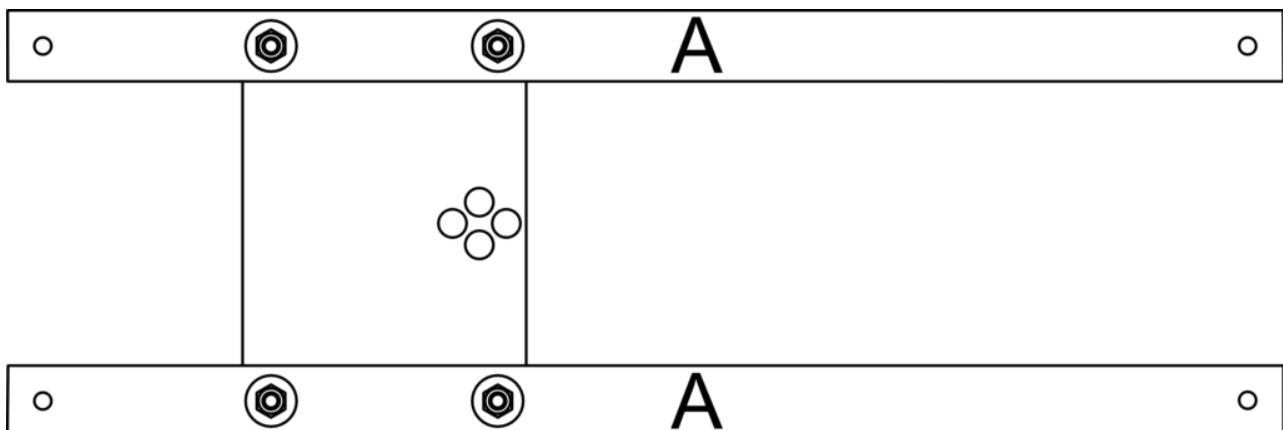


Preparing the Hive Scale



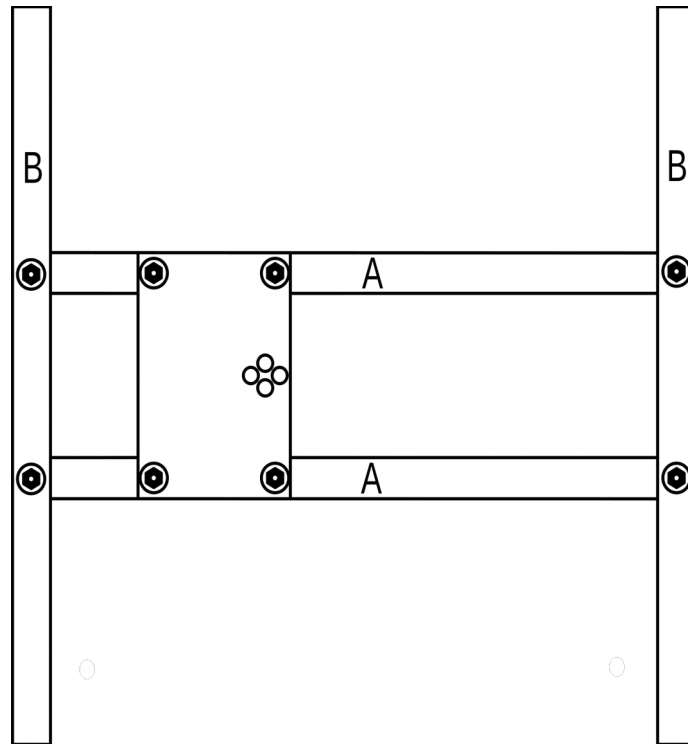
You should have 4 square tubes with 4 holes each (A), 2 U-profiles with 2 holes each (B) and two plates in front of you. From these we will build two identical "H"s.

Let's start with step 1:

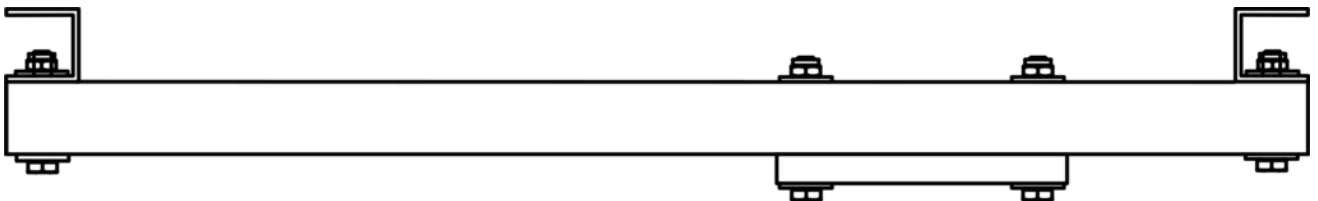


Take 4 of the long bolts, 4 nuts, 8 large washers, a plate and 2 square tubes (A). Screw the tubes onto the plate.

Step 2:



Take 4 of the long bolts, 4 nuts, 8 large washers and the two U-profiles (B). Screw the U-profiles so that the plate is at the bottom and the Us are at the top. Here is the side view:

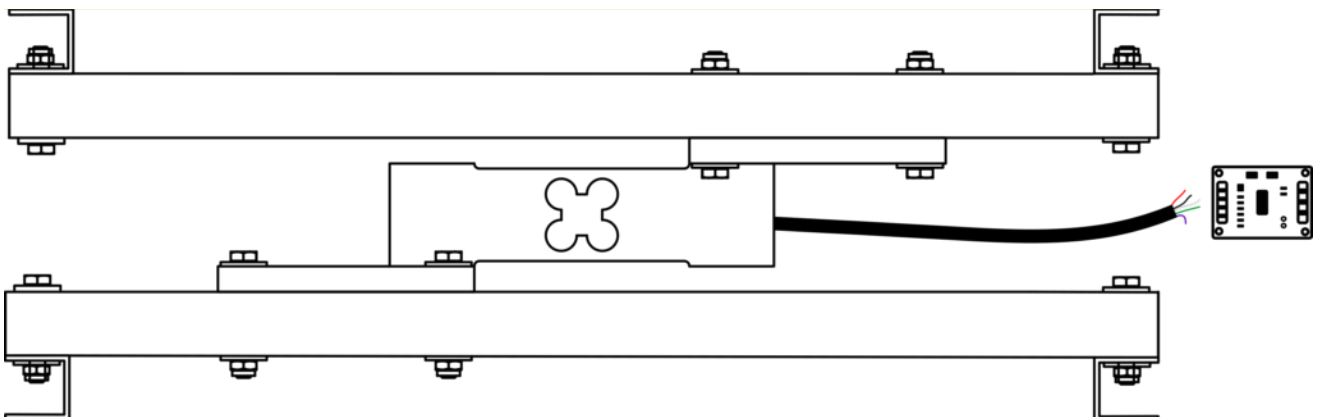


Now you have a big "H".

Step 3:

Repeat steps 1 and 2 to get a second "H".

Step 5:



Take the 8 short screws, the 8 small washers, the load cell and the two "H"s freshly

screwed together. One "H" is the bottom plate, the other H goes on top. This is where the hive will be placed later. The load cell must be located between the two Hs. Screw the plate of the first "H" onto the load cell from above with 4 screws each (don't forget the washers). Turn everything over so that the load cell is on top again. Screw the second "H" onto the load cell. Make sure that both "H"s are exactly on top of each other.